

Oracle E-Business Suite (EBS)

Easy Monitoring and Reporting of Critical Access in Oracle EBS



FASTPATH

As an Oracle EBS user, you know how to leverage the platform to run your business, but you may not have visibility into who has access to perform critical functions, as well as monitoring what your admins are doing with their broad-based access. Fastpath has developed a cloud-based application that integrates with your Oracle EBS instance to enable you to manage access and user behavior from one location.

At a glance...

- Analyze SoD by user, responsibility, and function, down to the lowest levels of access.
- Review and sign-off on controls, mitigation, and user access certifications within the solution.
- Monitor user access risk across all your business-critical applications, not just Oracle EBS.
- Use Audit Trail to monitor user activity, including any changes that were made, by whom, and before and after values.
- Identify transactions with potentially large risk exposure or other anomalies with Fastpath's Transaction Control Monitor (TCM).
- Schedule Start and Stop times for Emergency/ Temporary access.

Key Features For Each Fastpath Assure Module

Segregation of Duties

The Segregation of Duties (SoD) module includes a ruleset out-of-the box, built specifically for Oracle EBS by our team of certified auditors. With over 125 conflicts in the ruleset, you can easily add to and customize it for your specific needs. Each conflict can be assigned a risk level and business or IT activities with groups of functions and/or concurrent programs.

- Extensive list of SoD conflicts specifically designed for Oracle EBS
- SoD Analysis can be performed by user, responsibility, or function
- Out-of-the-box ruleset that is easily customizable
- Assists in Sarbanes-Oxley (SOX) compliance in Oracle EBS
- Simple to review and sign-off on mitigating controls

Access Reviews

With an out-of-the-box report, you can quickly analyze who has access to critical data at a very granular level to reduce the resources and time needed to conduct these reviews regularly.

- Understand potential SoD risks before granting approval
- Security reporting by user, responsibility, menu and function
- Define custom report schedules (daily, weekly, monthly)

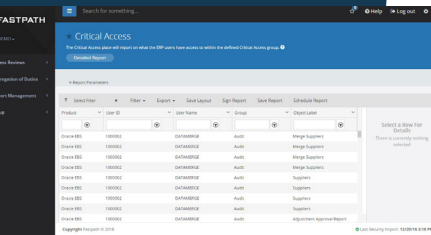
Identity Manager

Identity Manager streamlines user access requests and approvals without IT involvement. Requests made in Identity Manager go through a customizable workflow of approvers based on the permissions requested and who is requesting them. Once approved, the request is automatically applied without the need for IT.

- Automated compliant user provisioning in Oracle EBS
- Streamlined approval process
- Easily analyze access requests for conflicts with our SoD module



Fastpath Assure gives us key insights into our business application security and business processes so that we can improve risk mitigation.
-Senior Staff Accountant



About Fastpath

Fastpath Assure is a risk and compliance management platform that helps thousands of organizations track, review, approve, and mitigate user access, conflicts, and Segregation of Duties (SoD) risks. Fastpath customers achieve process efficiency, streamlined audits, and enhanced control over their security, audit, and compliance management efforts.

Comprehensive Security Auditing Platform to Analyze Segregation of Duties, Critical Transactions, and Key Access

- Visibility into SoD risks during requests and approvals with Assure integration
- Schedule Start and Stop times for Emergency/Temporary access
- Supports Role Based Access Control (RBAC) to provision role grants and revokes in addition to responsibilities

Access Certification

Schedule periodic reviews and sign-off of different types of access: Conflict, Responsibility Assignment, Responsibility Configuration, Critical Access, Business Process, and Product with Access Certification. The module will allow you to define owners of the access type for review and schedule reviews for both full access reviews and rolling access reviews.

- **'Run Now' Capability.** Ability to run a schedule on-demand from the 'Review Schedules' setup place. This will allow you to create reviews without having to wait until the next scheduled run time.
- **Delete Reviews.** Ability to delete a review from the 'All Reviews' page. This will delete all of the review items included in this review.
- **Export From All Reviews.** Export reviews from the 'All Reviews' page to include the Generated Date, Due Date, and Completed Date of the reviewers and review items.

Audit Trail

Through the Audit Trail functionality, companies can focus on the highest risk business objects and attributes to continuously monitor changes. Leveraging the auditor-designed templates included in the module, tracking critical changes is simple and straightforward, with minimum system impact.

- Ability to track all critical setup and configuration changes made to Oracle EBS
- Standard Audit Trail templates make implementation quick for immediate ROI
- Review and sign-off on changes
- Capture before and after values, including items that have been deleted
- Automate with custom report schedules (daily, weekly, monthly) and send via Excel or PDF attachment

Transaction Controls Monitor

Fastpath TCM evaluates transaction data taken from multiple areas of risk and identifies transactions with potential risk or exceed acceptable thresholds. This information can be used by internal auditors and GRC professionals to locate areas of potential fraud or greater monetary risk.

- Select the threshold amount and the period to analyze (year, quarter, month)
- Focus your search on specific users, SoD concerns, and system security
- Analyze data from multiple areas of risk, including AP, GL, and invoicing records
- Use TCM to identify suppliers with duplicate names, suppliers with blank Tax IDs, invoices and payments created by the same user, payment and supplier created by the same user, and more